



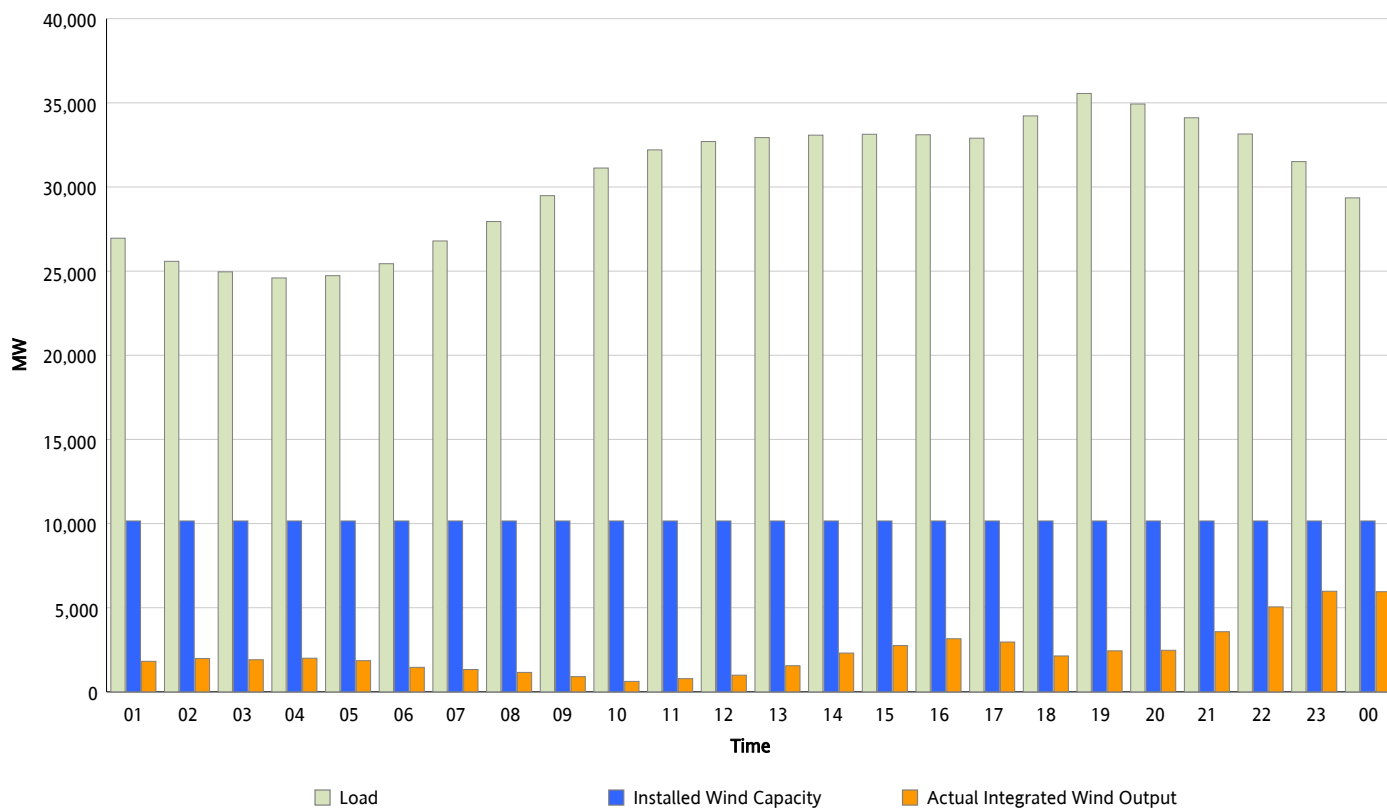
ERCOT Grid Operations

Wind Integration Report : 12/08/2012

| | |
|----------------------|-----------|
| Peak Load | 35,557 MW |
| Load Peak Hour (HE) | 19 |
| Wind Over Peak | 2,438 MW |
| Wind Record 11/10/12 | 8,521 MW |
| Max Wind Value* | 6,138 MW |
| Wind Peak Time | 22:41 |
| Wind Integration % | 19.67 % |

Hourly Average Actual Load vs. Actual Wind Output

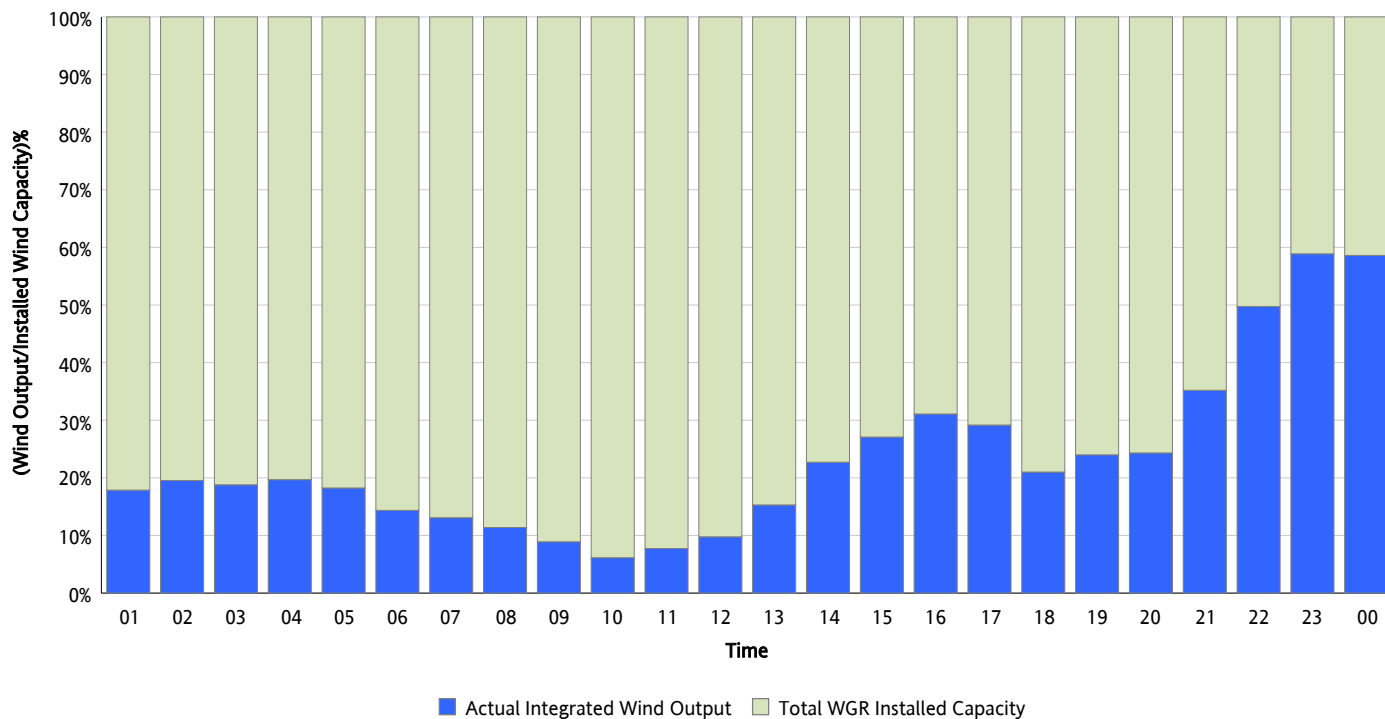
12/08/2012



* Wind Record and Wind Max represent instantaneous values and the rest of the values are integrated over the hour

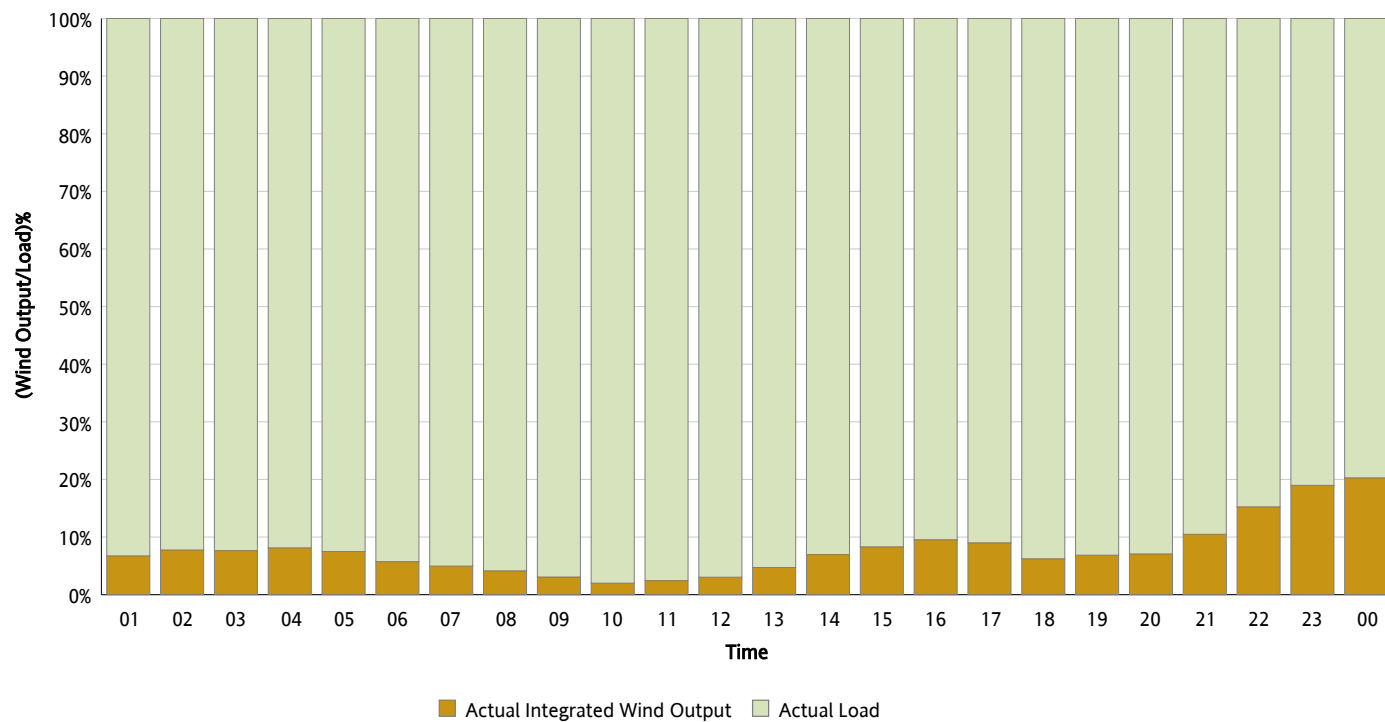
Actual Wind Output as a Percentage of the Total Installed Wind Capacity

12/08/2012



Actual Wind Output as a Percentage of the ERCOT Load

12/08/2012



ERCOT Load vs. Actual Wind Output

12/01/2012 - 12/08/2012

